

Security lobe knobs



- **Lobe solid cap**

Glass-fibre reinforced polyamide based (PA) technopolymer with security anti-intrusion-profiled key slot. Resistant to solvents, oils, greases and other chemical agents.

- **Flange**

Technopolymer, ultrasonically welded.

- **Colour**

Black, matte finish.

- **Clamping element**

Acetal resin based (POM) technopolymer.

- **Assembly**

Brass boss, tapped blind hole.

- **Security key** (to be ordered separately)

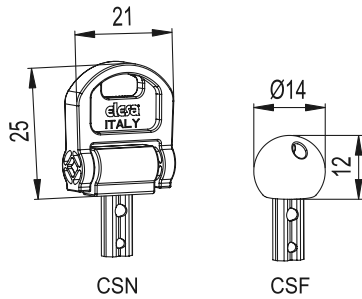
- **CSN** (code 6951): acetal resin based (POM) technopolymer fold-away key, red colour, anti-intrusion-profiled stainless steel insert.

- **CSF** (code 6952): polyamide based (PA) technopolymer ball key, red colour, anti-intrusion-profiled stainless steel insert.

On request and for sufficient quantities the security keys can be supplied in black colour too.



2
158
Clamping knobs

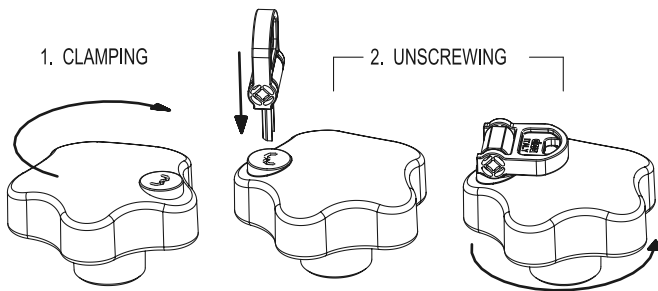


- **Security device**

VLS. security lobe knobs have been designed to be unscrewed only by authorised people, provided with the security key. Without the security key, the knob turns without unscrewing.

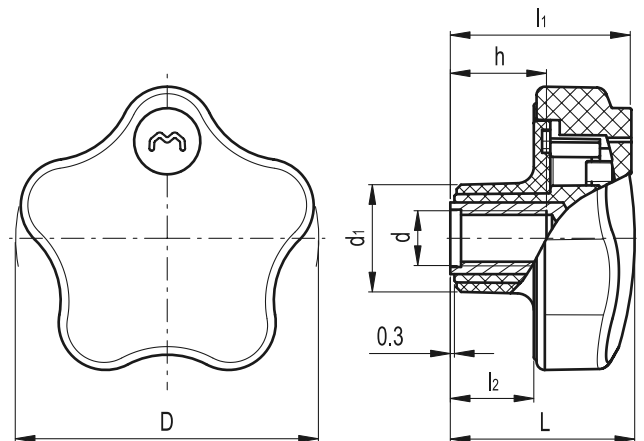
1. Clamping: clamp the knob by screwing it as for a normal knob. Mind that the security key is not inserted.

2. Unscrewing: simply insert the security key (without turning it) and unscrew the knob.



Features and applications

The particular design of the internal device and of the flange helps the drainage of any dirt (dust, earth, liquid).



Standard Elements		Main dimensions					Mounting hole		Δ
Code	Description	D	L	l ₁	d ₁	l ₂	d 6H	h	g
76501*	VLS.42 B-M6	41.5	30	29.5	16.5	14.5	M6	12	25
76502*	VLS.42 B-M8	41.5	30	29.5	16.5	14.5	M8	13	26
76551*	VLS.55 B-M8	55	33	32	19	15	M8	13	33
76552*	VLS.55 B-M10	55	33	32	19	15	M10	17	35

* Keys are not supplied with the knobs, to be ordered separately

