

## Ball jointed levelling elements



### •Thrust pads

AISI 303 stainless steel.

### •O-Ring

- Rubber FPM (Viton®).
- temperature resistant up to 200 °C.

### •Threaded stud

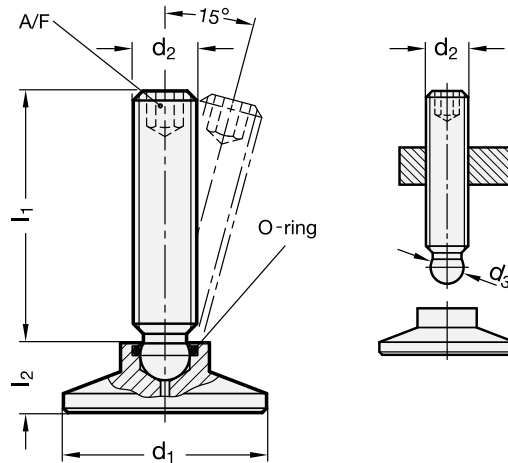
AISI 303 stainless steel **NV**.

### Features and applications


Ball jointed levelling elements GN 638 are low cost components. They can be used for clamping operations or for load bearing purposes.

Another good feature is a smaller size ball diameter than the trunk of the threaded stud. As a result the studs can be screwed into position from the ball side. The ball end can easily be hammered in and also dismantled.

A combination of ball jointed levelling elements GN 638 with any handle component will give useful clamping alternatives.



Standard Elements Description	Main dimensions			Threaded stem		Wrench	Static load in kN	△△
	d <sub>1</sub>	l <sub>2</sub>	d <sub>3</sub> ≈	d <sub>2</sub>	l <sub>1</sub>	A/F		g
GN 638-21-M6-26-NV	21	10	4.5	M6	26	3	3.5	20
GN 638-21-M6-36-NV	21	10	4.5	M6	36	3	3.5	25
GN 638-21-M6-46-NV	21	10	4.5	M6	46	3	3.5	30
GN 638-21-M8-20-NV	21	10	6.1	M8	20	4	7.0	20
GN 638-21-M8-35-NV	21	10	6.1	M8	35	4	7.0	25
GN 638-21-M8-45-NV	21	10	6.1	M8	45	4	7.0	30
GN 638-21-M8-58-NV	21	10	6.1	M8	58	4	7.0	40
GN 638-21-M10-34-NV	21	10	7.8	M10	34	5	11.0	35
GN 638-21-M10-44-NV	21	10	7.8	M10	44	5	11.0	40
GN 638-21-M10-57-NV	21	10	7.8	M10	57	5	11.0	50
GN 638-21-M10-74-NV	21	10	7.8	M10	74	5	11.0	60
GN 638-21-M12-34-NV	21	10	9.4	M12	34	6	16.0	40
GN 638-21-M12-57-NV	21	10	9.4	M12	57	6	16.0	50
GN 638-21-M12-74-NV	21	10	9.4	M12	74	6	16.0	60
GN 638-21-M12-94-NV	21	10	9.4	M12	94	6	16.0	70

Standard Elements	Main dimensions			Threaded stem		Wrench	Static load in kN	
Description	d1	l2	d3 ≈	d2	l1	A/F		g
GN 638-25-M6-26-NV	25	10.5	4.5	M6	26	3	3.5	20
GN 638-25-M6-36-NV	25	10.5	4.5	M6	36	3	3.5	30
GN 638-25-M6-46-NV	25	10.5	4.5	M6	46	3	3.5	40
GN 638-25-M8-20-NV	25	10.5	6.1	M8	20	4	7.0	20
GN 638-25-M8-35-NV	25	10.5	6.1	M8	35	4	7.0	30
GN 638-25-M8-45-NV	25	10.5	6.1	M8	45	4	7.0	40
GN 638-25-M8-58-NV	25	10.5	6.1	M8	58	4	7.0	50
GN 638-25-M10-34-NV	25	10.5	7.8	M10	34	5	11.0	30
GN 638-25-M10-44-NV	25	10.5	7.8	M10	44	5	11.0	40
GN 638-25-M10-57-NV	25	10.5	7.8	M10	57	5	11.0	50
GN 638-25-M10-74-NV	25	10.5	7.8	M10	74	5	11.0	60
GN 638-25-M12-34-NV	25	10.5	9.4	M12	34	6	16.0	60
GN 638-25-M12-57-NV	25	10.5	9.4	M12	57	6	16.0	90
GN 638-25-M12-74-NV	25	10.5	9.4	M12	74	6	16.0	105
GN 638-25-M12-94-NV	25	10.5	9.4	M12	94	6	16.0	115
GN 638-32-M6-26-NV	32	11	4.5	M6	26	3	3.5	20
GN 638-32-M6-36-NV	32	11	4.5	M6	36	3	3.5	30
GN 638-32-M6-46-NV	32	11	4.5	M6	46	3	3.5	40
GN 638-32-M8-20-NV	32	11	6.1	M8	20	4	7.0	30
GN 638-32-M8-35-NV	32	11	6.1	M8	35	4	7.0	40
GN 638-32-M8-45-NV	32	11	6.1	M8	45	4	7.0	50
GN 638-32-M8-58-NV	32	11	6.1	M8	58	4	7.0	60
GN 638-32-M10-34-NV	32	11	7.8	M10	34	5	11.0	62
GN 638-32-M10-44-NV	32	11	7.8	M10	44	5	11.0	65
GN 638-32-M10-57-NV	32	11	7.8	M10	57	5	11.0	80
GN 638-32-M10-74-NV	32	11	7.8	M10	74	5	11.0	90
GN 638-32-M12-34-NV	32	11	9.4	M12	34	6	16.0	95
GN 638-32-M12-57-NV	32	11	9.4	M12	57	6	16.0	100
GN 638-32-M12-74-NV	32	11	9.4	M12	74	6	16.0	115
GN 638-32-M12-94-NV	32	11	9.4	M12	94	6	16.0	130
GN 638-40-M8-20-NV	40	13	6.1	M8	20	4	7.0	70
GN 638-40-M8-35-NV	40	13	6.1	M8	35	4	7.0	80
GN 638-40-M8-45-NV	40	13	6.1	M8	45	4	7.0	90
GN 638-40-M8-58-NV	40	13	6.1	M8	58	4	7.0	100
GN 638-40-M10-34-NV	40	13	7.8	M10	34	5	11.0	80
GN 638-40-M10-44-NV	40	13	7.8	M10	44	5	11.0	90
GN 638-40-M10-57-NV	40	13	7.8	M10	57	5	11.0	100
GN 638-40-M10-74-NV	40	13	7.8	M10	74	5	11.0	110
GN 638-40-M12-34-NV	40	13	9.4	M12	34	6	16.0	110
GN 638-40-M12-57-NV	40	13	9.4	M12	57	6	16.0	118
GN 638-40-M12-74-NV	40	13	9.4	M12	74	6	16.0	120
GN 638-40-M12-94-NV	40	13	9.4	M12	94	6	16.0	140