

GN 289

Swivel clamp connector joints

•Material

Aluminium.

•Finish

- Version **SW**: RAL 9005 black colour, matte finish, epoxy resin coating.
- Version **BL**: blank, matte shot-blasted.

•Standard execution available

Type **S**: stepless adjustment.

•Clamping screws

- Identification no. **1**: with three clamping screws DIN 912 and nuts DIN 985, zinc-plated.
- Identification no. **2**: with three AISI 304 stainless steel-clamping screws DIN 912 and nuts DIN 985.

•Assembly

The standard clamping bolts are socket cap screws DIN 912, supplied assembled. They can be replaced by clamping kits GN 911 (description see table of dimensions).

Features and applications

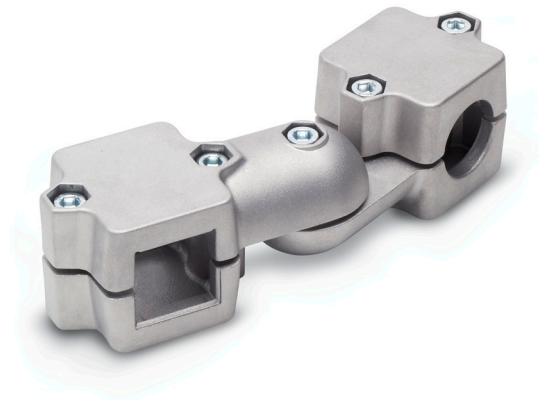
The swivel clamp connector joints GN 289 are an assembly of two swivel clamp connectors GN 279.

The swivel clamp connectors have an identical swivel width "b", so that all bores „d₁/s₁" and „d₂/s₂" can be combined as required.

The clamping bores of swivel clamp connector joints GN 289 are unmachined and are designed for construction tubings GN 990 or DIN 2391, DIN 2395 and DIN 2462 respectively.

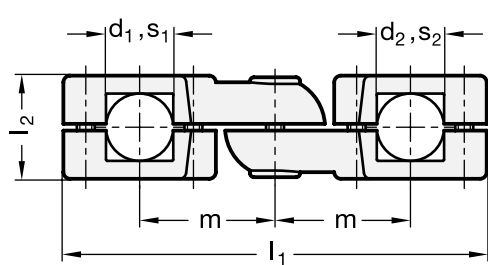
Accessories

- Construction tubings GN 990 (see page 109ff.).
- Clamping kits GN 911 (clamping handles GN 300.1 with distance bushing see page 116).

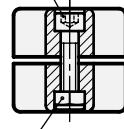


102

Tube clamp connectors, Linear actuators

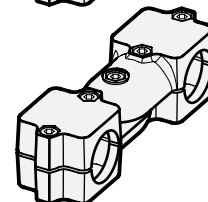
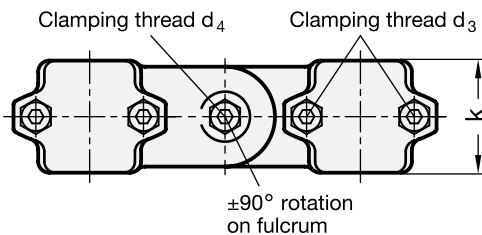
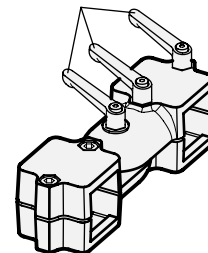


Hexagon nut DIN 985 self-locking (Polyamide ring)



Hexagon nut DIN 985 self-locking (Polyamide ring)

Adjustable clamping lever GN 911



Standard Elements	Main dimensions											Clamping lever		\triangle
Description	d1	s1	d2	s2	b Swivel width	d3	d4	k	l1	l2	m	for d3	for d4	g
GN 289-B40-B40-S-1-*	B40	-	B40	-	65	M10	M10	76	268	70	85	GN 911-M10-55	GN 911-M10-63	1768
GN 288-B40-B42-S-1-*	B40	-	B42	-	65	M10	M10	76	268	70	85	GN 911-M10-55	GN 911-M10-63	1746
GN 288-B40-B45-S-1-*	B40	-	B45	-	65	M10	M10	76	268	70	85	GN 911-M10-55	GN 911-M10-63	1727
GN 288-B40-B48-S-1-*	B40	-	B48	-	65	M10	M10	76	268	70	85	GN 911-M10-55	GN 911-M10-63	1715
GN 288-B40-B50-S-1-*	B40	-	B50	-	65	M10	M10	76	268	70	85	GN 911-M10-55	GN 911-M10-63	1707
GN 289-B40-V40-S-1-*	B40	-	-	V40	65	M10	M10	76	268	70	85	GN 911-M10-55	GN 911-M10-63	1732
GN 289-B40-V45-S-1-*	B40	-	-	V45	65	M10	M10	76	268	70	85	GN 911-M10-55	GN 911-M10-63	1689
GN 289-B40-V50-S-1-*	B40	-	-	V50	65	M10	M10	76	268	70	85	GN 911-M10-55	GN 911-M10-63	1648
GN 289-V40-B40-S-1-*	-	V40	B40	-	65	M10	M10	76	268	70	85	GN 911-M10-55	GN 911-M10-63	1732
GN 288-V40-B42-S-1-*	-	V40	B42	-	65	M10	M10	76	268	70	85	GN 911-M10-55	GN 911-M10-63	1680
GN 288-V40-B45-S-1-*	-	V40	B45	-	65	M10	M10	76	268	70	85	GN 911-M10-55	GN 911-M10-63	1667
GN 288-V40-B48-S-1-*	-	V40	B48	-	65	M10	M10	76	268	70	85	GN 911-M10-55	GN 911-M10-63	1649
GN 288-V40-B50-S-1-*	-	V40	B50	-	65	M10	M10	76	268	70	85	GN 911-M10-55	GN 911-M10-63	1641
GN 289-V40-V40-S-1-*	-	V40	-	V40	65	M10	M10	76	268	70	85	GN 911-M10-55	GN 911-M10-63	1636
GN 289-V40-V45-S-1-*	-	V40	-	V45	65	M10	M10	76	268	70	85	GN 911-M10-55	GN 911-M10-63	1623
GN 289-V40-V50-S-1-*	-	V40	-	V50	65	M10	M10	76	268	70	85	GN 911-M10-55	GN 911-M10-63	1588
GN 289-B42-B40-S-1-*	B42	-	B40	-	65	M10	M10	76	268	70	85	GN 911-M10-55	GN 911-M10-63	1746
GN 289-B42-B42-S-1-*	B42	-	B42	-	65	M10	M10	76	268	70	85	GN 911-M10-55	GN 911-M10-63	1724
GN 289-B42-B45-S-1-*	B42	-	B45	-	65	M10	M10	76	268	70	85	GN 911-M10-55	GN 911-M10-63	1711
GN 289-B42-B48-S-1-*	B42	-	B48	-	65	M10	M10	76	268	70	85	GN 911-M10-55	GN 911-M10-63	1693
GN 289-B42-B50-S-1-*	B42	-	B50	-	65	M10	M10	76	268	70	85	GN 911-M10-55	GN 911-M10-63	1685
GN 289-B42-V40-S-1-*	B42	-	-	V40	65	M10	M10	76	268	70	85	GN 911-M10-55	GN 911-M10-63	1680
GN 289-B42-V45-S-1-*	B42	-	-	V45	65	M10	M10	76	268	70	85	GN 911-M10-55	GN 911-M10-63	1667
GN 289-B42-V50-S-1-*	B42	-	-	V50	65	M10	M10	76	268	70	85	GN 911-M10-55	GN 911-M10-63	1632
GN 289-B45-B40-S-1-*	B45	-	B40	-	65	M10	M10	76	268	70	85	GN 911-M10-55	GN 911-M10-63	1727
GN 289-B45-B42-S-1-*	B45	-	B42	-	65	M10	M10	76	268	70	85	GN 911-M10-55	GN 911-M10-63	1711
GN 289-B45-B45-S-1-*	B45	-	B45	-	65	M10	M10	76	268	70	85	GN 911-M10-55	GN 911-M10-63	1698
GN 289-B45-B48-S-1-*	B45	-	B48	-	65	M10	M10	76	268	70	85	GN 911-M10-55	GN 911-M10-63	1680
GN 289-B45-B50-S-1-*	B45	-	B50	-	65	M10	M10	76	268	70	85	GN 911-M10-55	GN 911-M10-63	1672
GN 289-B45-V40-S-1-*	B45	-	-	V40	65	M10	M10	76	268	70	85	GN 911-M10-55	GN 911-M10-63	1667
GN 289-B45-V45-S-1-*	B45	-	-	V45	65	M10	M10	76	268	70	85	GN 911-M10-55	GN 911-M10-63	1654
GN 289-B45-V50-S-1-*	B45	-	-	V50	65	M10	M10	76	268	70	85	GN 911-M10-55	GN 911-M10-63	1619
GN 289-V45-B40-S-1-*	-	V45	B40	-	65	M10	M10	76	268	70	85	GN 911-M10-55	GN 911-M10-63	1689
GN 288-V45-B42-S-1-*	-	V45	B42	-	65	M10	M10	76	268	70	85	GN 911-M10-55	GN 911-M10-63	1667
GN 288-V45-B45-S-1-*	-	V45	B45	-	65	M10	M10	76	268	70	85	GN 911-M10-55	GN 911-M10-63	1654
GN 288-V45-B48-S-1-*	-	V45	B48	-	65	M10	M10	76	268	70	85	GN 911-M10-55	GN 911-M10-63	1630
GN 288-V45-B50-S-1-*	-	V45	B50	-	65	M10	M10	76	268	70	85	GN 911-M10-55	GN 911-M10-63	1628
GN 289-V45-V40-S-1-*	-	V45	-	V40	65	M10	M10	76	268	70	85	GN 911-M10-55	GN 911-M10-63	1623
GN 289-V45-V45-S-1-*	-	V45	-	V45	65	M10	M10	76	268	70	85	GN 911-M10-55	GN 911-M10-63	1610
GN 289-V45-V50-S-1-*	-	V45	-	V50	65	M10	M10	76	268	70	85	GN 911-M10-55	GN 911-M10-63	1575

* Complete the description of the standard item needed by adding the finish of the connector clamps: BL (blank) or SW (black).

Standard Elements	Main dimensions											Clamping lever		Δ
Description	d1	s1	d2	s2	b Swivel width	d3	d4	k	l1	l2	m	for d3	for d4	g
GN 289-B48-B40-S-1-*	B48	-	B40	-	65	M10	M10	76	268	70	85	GN 911-M10-55	GN 911-M10-63	1715
GN 289-B48-B42-S-1-*	B48	-	B42	-	65	M10	M10	76	268	70	85	GN 911-M10-55	GN 911-M10-63	1693
GN 289-B48-B45-S-1-*	B48	-	B45	-	65	M10	M10	76	268	70	85	GN 911-M10-55	GN 911-M10-63	1680
GN 289-B48-B48-S-1-*	B48	-	B48	-	65	M10	M10	76	268	70	85	GN 911-M10-55	GN 911-M10-63	1662
GN 289-B48-B50-S-1-*	B48	-	B50	-	65	M10	M10	76	268	70	85	GN 911-M10-55	GN 911-M10-63	1654
GN 289-B48-V40-S-1-*	B48	-	-	V40	65	M10	M10	76	268	70	85	GN 911-M10-55	GN 911-M10-63	1649
GN 289-B48-V45-S-1-*	B48	-	-	V45	65	M10	M10	76	268	70	85	GN 911-M10-55	GN 911-M10-63	1630
GN 289-B48-V50-S-1-*	B48	-	-	V50	65	M10	M10	76	268	70	85	GN 911-M10-55	GN 911-M10-63	1601
GN 289-B50-B40-S-1-*	B50	-	B40	-	65	M10	M10	76	268	70	85	GN 911-M10-55	GN 911-M10-63	1707
GN 289-B50-B42-S-1-*	B50	-	B42	-	65	M10	M10	76	268	70	85	GN 911-M10-55	GN 911-M10-63	1685
GN 289-B50-B45-S-1-*	B50	-	B45	-	65	M10	M10	76	268	70	85	GN 911-M10-55	GN 911-M10-63	1672
GN 289-B50-B48-S-1-*	B50	-	B48	-	65	M10	M10	76	268	70	85	GN 911-M10-55	GN 911-M10-63	1654
GN 289-B50-B50-S-1-*	B50	-	B50	-	65	M10	M10	76	268	70	85	GN 911-M10-55	GN 911-M10-63	1646
GN 289-B50-V40-S-1-*	B50	-	-	V40	65	M10	M10	76	268	70	85	GN 911-M10-55	GN 911-M10-63	1641
GN 289-B50-V45-S-1-*	B50	-	-	V45	65	M10	M10	76	268	70	85	GN 911-M10-55	GN 911-M10-63	1628
GN 289-B50-V50-S-1-*	B50	-	-	V50	65	M10	M10	76	268	70	85	GN 911-M10-55	GN 911-M10-63	1593
GN 289-V50-B40-S-1-*	-	V50	B40	-	65	M10	M10	76	268	70	85	GN 911-M10-55	GN 911-M10-63	1648
GN 288-V50-B42-S-1-*	-	V50	B42	-	65	M10	M10	76	268	70	85	GN 911-M10-55	GN 911-M10-63	1632
GN 288-V50-B45-S-1-*	-	V50	B45	-	65	M10	M10	76	268	70	85	GN 911-M10-55	GN 911-M10-63	1619
GN 288-V50-B48-S-1-*	-	V50	B48	-	65	M10	M10	76	268	70	85	GN 911-M10-55	GN 911-M10-63	1601
GN 288-V50-B50-S-1-*	-	V50	B50	-	65	M10	M10	76	268	70	85	GN 911-M10-55	GN 911-M10-63	1593
GN 289-V50-V40-S-1-*	-	V50	-	V40	65	M10	M10	76	268	70	85	GN 911-M10-55	GN 911-M10-63	1588
GN 289-V50-V45-S-1-*	-	V50	-	V45	65	M10	M10	76	268	70	85	GN 911-M10-55	GN 911-M10-63	1575
GN 289-V50-V50-S-1-*	-	V50	-	V50	65	M10	M10	76	268	70	85	GN 911-M10-55	GN 911-M10-63	1540
GN 289-B40-B40-S-2-*	B40	-	B40	-	65	M10	M10	76	268	70	85	GN 911-M10-55	GN 911-M10-63	1768
GN 288-B40-B42-S-2-*	B40	-	B42	-	65	M10	M10	76	268	70	85	GN 911-M10-55	GN 911-M10-63	1746
GN 288-B40-B45-S-2-*	B40	-	B45	-	65	M10	M10	76	268	70	85	GN 911-M10-55	GN 911-M10-63	1727
GN 288-B40-B48-S-2-*	B40	-	B48	-	65	M10	M10	76	268	70	85	GN 911-M10-55	GN 911-M10-63	1715
GN 288-B40-B50-S-2-*	B40	-	B50	-	65	M10	M10	76	268	70	85	GN 911-M10-55	GN 911-M10-63	1707
GN 289-B40-V40-S-2-*	B40	-	-	V40	65	M10	M10	76	268	70	85	GN 911-M10-55	GN 911-M10-63	1732
GN 289-B40-V45-S-2-*	B40	-	-	V45	65	M10	M10	76	268	70	85	GN 911-M10-55	GN 911-M10-63	1689
GN 289-B40-V50-S-2-*	B40	-	-	V50	65	M10	M10	76	268	70	85	GN 911-M10-55	GN 911-M10-63	1648
GN 289-V40-B40-S-2-*	-	V40	B40	-	65	M10	M10	76	268	70	85	GN 911-M10-55	GN 911-M10-63	1732
GN 288-V40-B42-S-2-*	-	V40	B42	-	65	M10	M10	76	268	70	85	GN 911-M10-55	GN 911-M10-63	1680
GN 288-V40-B45-S-2-*	-	V40	B45	-	65	M10	M10	76	268	70	85	GN 911-M10-55	GN 911-M10-63	1667
GN 288-V40-B48-S-2-*	-	V40	B48	-	65	M10	M10	76	268	70	85	GN 911-M10-55	GN 911-M10-63	1649
GN 288-V40-B50-S-2-*	-	V40	B50	-	65	M10	M10	76	268	70	85	GN 911-M10-55	GN 911-M10-63	1641
GN 289-V40-V40-S-2-*	-	V40	-	V40	65	M10	M10	76	268	70	85	GN 911-M10-55	GN 911-M10-63	1636
GN 289-V40-V45-S-2-*	-	V40	-	V45	65	M10	M10	76	268	70	85	GN 911-M10-55	GN 911-M10-63	1623
GN 289-V40-V50-S-2-*	-	V40	-	V50	65	M10	M10	76	268	70	85	GN 911-M10-55	GN 911-M10-63	1588
GN 289-B42-B40-S-2-*	B42	-	B40	-	65	M10	M10	76	268	70	85	GN 911-M10-55	GN 911-M10-63	1746
GN 289-B42-B42-S-2-*	B42	-	B42	-	65	M10	M10	76	268	70	85	GN 911-M10-55	GN 911-M10-63	1724
GN 289-B42-B45-S-2-*	B42	-	B45	-	65	M10	M10	76	268	70	85	GN 911-M10-55	GN 911-M10-63	1711
GN 289-B42-B48-S-2-*	B42	-	B48	-	65	M10	M10	76	268	70	85	GN 911-M10-55	GN 911-M10-63	1693
GN 289-B42-B50-S-2-*	B42	-	B50	-	65	M10	M10	76	268	70	85	GN 911-M10-55	GN 911-M10-63	1685

* Complete the description of the standard item needed by adding the finish of the connector clamps: BL (blank) or SW (black).



Standard Elements	Main dimensions											Clamping lever		Δ
Description	d1	s1	d2	s2	b Swivel width	d3	d4	k	l1	l2	m	for d3	for d4	g
GN 289-B42-V40-S-2-*	B42	-	-	V40	65	M10	M10	76	268	70	85	GN 911-M10-55	GN 911-M10-63	1680
GN 289-B42-V45-S-2-*	B42	-	-	V45	65	M10	M10	76	268	70	85	GN 911-M10-55	GN 911-M10-63	1667
GN 289-B42-V50-S-2-*	B42	-	-	V50	65	M10	M10	76	268	70	85	GN 911-M10-55	GN 911-M10-63	1632
GN 289-B45-B40-S-2-*	B45	-	B40	-	65	M10	M10	76	268	70	85	GN 911-M10-55	GN 911-M10-63	1727
GN 289-B45-B42-S-2-*	B45	-	B42	-	65	M10	M10	76	268	70	85	GN 911-M10-55	GN 911-M10-63	1711
GN 289-B45-B45-S-2-*	B45	-	B45	-	65	M10	M10	76	268	70	85	GN 911-M10-55	GN 911-M10-63	1698
GN 289-B45-B48-S-2-*	B45	-	B48	-	65	M10	M10	76	268	70	85	GN 911-M10-55	GN 911-M10-63	1680
GN 289-B45-B50-S-2-*	B45	-	B50	-	65	M10	M10	76	268	70	85	GN 911-M10-55	GN 911-M10-63	1672
GN 289-B45-V40-S-2-*	B45	-	-	V40	65	M10	M10	76	268	70	85	GN 911-M10-55	GN 911-M10-63	1667
GN 289-B45-V45-S-2-*	B45	-	-	V45	65	M10	M10	76	268	70	85	GN 911-M10-55	GN 911-M10-63	1654
GN 289-B45-V50-S-2-*	B45	-	-	V50	65	M10	M10	76	268	70	85	GN 911-M10-55	GN 911-M10-63	1619
GN 289-V45-B40-S-2-*	-	V45	B40	-	65	M10	M10	76	268	70	85	GN 911-M10-55	GN 911-M10-63	1689
GN 288-V45-B42-S-2-*	-	V45	B42	-	65	M10	M10	76	268	70	85	GN 911-M10-55	GN 911-M10-63	1667
GN 288-V45-B45-S-2-*	-	V45	B45	-	65	M10	M10	76	268	70	85	GN 911-M10-55	GN 911-M10-63	1654
GN 288-V45-B48-S-2-*	-	V45	B48	-	65	M10	M10	76	268	70	85	GN 911-M10-55	GN 911-M10-63	1630
GN 288-V45-B50-S-2-*	-	V45	B50	-	65	M10	M10	76	268	70	85	GN 911-M10-55	GN 911-M10-63	1628
GN 289-V45-V40-S-2-*	-	V45	-	V40	65	M10	M10	76	268	70	85	GN 911-M10-55	GN 911-M10-63	1623
GN 289-V45-V45-S-2-*	-	V45	-	V45	65	M10	M10	76	268	70	85	GN 911-M10-55	GN 911-M10-63	1610
GN 289-V45-V50-S-2-*	-	V45	-	V50	65	M10	M10	76	268	70	85	GN 911-M10-55	GN 911-M10-63	1575
GN 289-B48-B40-S-2-*	B48	-	B40	-	65	M10	M10	76	268	70	85	GN 911-M10-55	GN 911-M10-63	1715
GN 289-B48-B42-S-2-*	B48	-	B42	-	65	M10	M10	76	268	70	85	GN 911-M10-55	GN 911-M10-63	1693
GN 289-B48-B45-S-2-*	B48	-	B45	-	65	M10	M10	76	268	70	85	GN 911-M10-55	GN 911-M10-63	1680
GN 289-B48-B48-S-2-*	B48	-	B48	-	65	M10	M10	76	268	70	85	GN 911-M10-55	GN 911-M10-63	1662
GN 289-B48-B50-S-2-*	B48	-	B50	-	65	M10	M10	76	268	70	85	GN 911-M10-55	GN 911-M10-63	1654
GN 289-B48-V40-S-2-*	B48	-	-	V40	65	M10	M10	76	268	70	85	GN 911-M10-55	GN 911-M10-63	1649
GN 289-B48-V45-S-2-*	B48	-	-	V45	65	M10	M10	76	268	70	85	GN 911-M10-55	GN 911-M10-63	1630
GN 289-B48-V50-S-2-*	B48	-	-	V50	65	M10	M10	76	268	70	85	GN 911-M10-55	GN 911-M10-63	1601
GN 289-B50-B40-S-2-*	B50	-	B40	-	65	M10	M10	76	268	70	85	GN 911-M10-55	GN 911-M10-63	1707
GN 289-B50-B42-S-2-*	B50	-	B42	-	65	M10	M10	76	268	70	85	GN 911-M10-55	GN 911-M10-63	1685
GN 289-B50-B45-S-2-*	B50	-	B45	-	65	M10	M10	76	268	70	85	GN 911-M10-55	GN 911-M10-63	1672
GN 289-B50-B48-S-2-*	B50	-	B48	-	65	M10	M10	76	268	70	85	GN 911-M10-55	GN 911-M10-63	1654
GN 289-B50-B50-S-2-*	B50	-	B50	-	65	M10	M10	76	268	70	85	GN 911-M10-55	GN 911-M10-63	1646
GN 289-B50-V40-S-2-*	B50	-	-	V40	65	M10	M10	76	268	70	85	GN 911-M10-55	GN 911-M10-63	1641
GN 289-B50-V45-S-2-*	B50	-	-	V45	65	M10	M10	76	268	70	85	GN 911-M10-55	GN 911-M10-63	1628
GN 289-B50-V50-S-2-*	B50	-	-	V50	65	M10	M10	76	268	70	85	GN 911-M10-55	GN 911-M10-63	1593
GN 289-V50-B40-S-2-*	-	V50	B40	-	65	M10	M10	76	268	70	85	GN 911-M10-55	GN 911-M10-63	1648
GN 288-V50-B42-S-2-*	-	V50	B42	-	65	M10	M10	76	268	70	85	GN 911-M10-55	GN 911-M10-63	1632
GN 288-V50-B45-S-2-*	-	V50	B45	-	65	M10	M10	76	268	70	85	GN 911-M10-55	GN 911-M10-63	1619
GN 288-V50-B48-S-2-*	-	V50	B48	-	65	M10	M10	76	268	70	85	GN 911-M10-55	GN 911-M10-63	1601
GN 288-V50-B50-S-2-*	-	V50	B50	-	65	M10	M10	76	268	70	85	GN 911-M10-55	GN 911-M10-63	1593
GN 289-V50-V40-S-2-*	-	V50	-	V40	65	M10	M10	76	268	70	85	GN 911-M10-55	GN 911-M10-63	1588
GN 289-V50-V45-S-2-*	-	V50	-	V45	65	M10	M10	76	268	70	85	GN 911-M10-55	GN 911-M10-63	1575
GN 289-V50-V50-S-2-*	-	V50	-	V50	65	M10	M10	76	268	70	85	GN 911-M10-55	GN 911-M10-63	1540

* Complete the description of the standard item needed by adding the finish of the connector clamps: BL (blank) or SW (black).