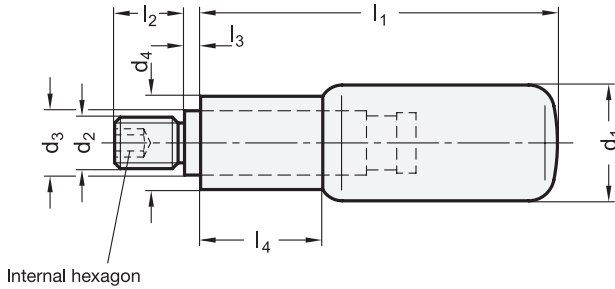




ROSTFREI
Inox
Stainless
Steel



1.1

1.2

1.3

1.4

2

3

d ₁		d ₂		d ₃	d ₄	l ₁	l ₂	l ₃ ≈	l ₄
KT	NI								
16	-	M 6	-	10	13	41,5	12	2,5	15
18	18	M 6	M 8	10	14,5	56	13	2,5	19
22	22	M 8	M 10	14	18,5	59	14	2,5	21
24	24	M 8	M 10	14	18,5	74	16	2,5	27
25	-	M 10	-	16	20	84	16	2,5	30

2.1

Specification

- Plastic
Technopolymer (Polyamide PA)
- temperature resistant up to 90 °C
- black, matt finish
- Stainless Steel
- AISI 303
- fine turned, blank

1

KT

NI

- Spindle
Stainless Steel AISI 303
- *Stainless Steel characteristics* → Page XYZ
- *Plastic characteristics* → Page XYZ
- **RoHS-compliant**

Information

Typical in design are the revolving handles GN 798.1 with their stepped shape consisting of two cylinders giving the operator a better grip.

see also...

- *Retractable handles GN 798.5 (with hold in both positions)* → Page 44

2.2

2.3

2.4

How to order

GN 798.1-KT-16-M6

1	Material
2	d ₁
3	d ₂

